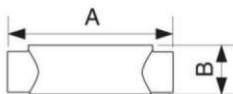
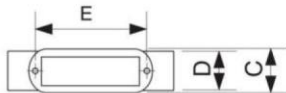


Conduit Outlet Boxes

C Type

Specifications

Threaded for use with RMC and IMC
 Stainless Steel 316 / 304 (Natural Finish)
 Covers Material : Stainless Steel 316 / 304 (Casting)
 Screws Material : Stainless Steel 316 / 304
 Standard Gaskets Material : Rubber



Ordering Information

*S for Stainless steel 316 / 304 to the end of Cat No.. Ex : C100S

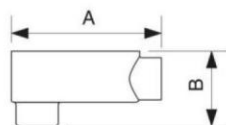
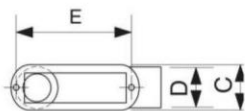
Trade Size	Cat. #	Dimensions (mm)				
		A	B	C	D	E
3/4	C 75	164	44	41	37	106
1	C100	187	55	47	44	123
1-1/2	C150	246	68	64	60	163
2	C200	277	84	82	75	191

*All Dimensions are subject to change without notice.

LB Type

Specifications

Threaded for use with RMC and IMC
 Stainless Steel 316 / 304 (Natural Finish)
 Covers Material : Stainless Steel 316 / 304 (Casting)
 Screws Material : Stainless Steel 316 / 304
 Standard Gaskets Material : Rubber



Ordering Information

*S for Stainless steel 316 / 304 to the end of Cat No.. Ex : LB100S

Trade Size	Cat. #	Dimensions (mm)				
		A	B	C	D	E
3/4	LB 75	142	64	41	37	106
1	LB100	163	75	47	44	123
1-1/2	LB150	214	99	64	60	163
2	LB200	245	114	82	75	191

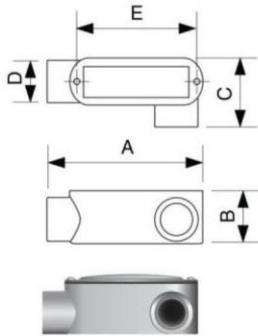
*All Dimensions are subject to change without notice.



LL Type

Specifications

Threaded for use with RMC and IMC
 Stainless Steel 316/ 304 (Natural Finish)
 Covers Material : Stainless Steel 316/ 304 (Casting)
 Screws Material : Stainless Steel 316/ 304
 Standard Gaskets Material : Rubber



Ordering Information

*S for Stainless steel 316 / 304 to the end of Cat No.. Ex : LL100S

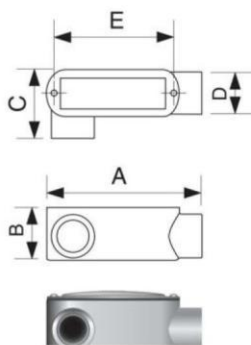
Trade Size	Cat. #	Dimensions (mm)				
		A	B	C	D	E
3/4	LL 75	144	45	63	37	106
1	LL100	165	53	68	44	123
1 1/2	LL150	216	68	95	60	163
2	LL200	245	84	111	75	191

*All Dimensions are subject to change without notice.

LR Type

Specifications

Threaded for use with RMC and IMC
 Stainless Steel 316/ 304 (Natural Finish)
 Covers Material : Stainless Steel 316/ 304 (Casting)
 Screws Material : Stainless Steel 316/ 304
 Standard Gaskets Material : Rubber



Ordering Information

*S for Stainless steel 316 / 304 to the end of Cat No.. Ex : LR100S

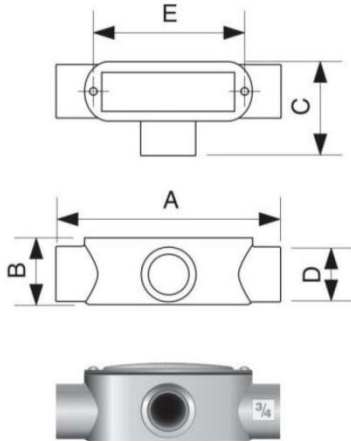
Trade Size	Cat. #	Dimensions (mm)				
		A	B	C	D	E
3/4	LR 75	144	45	63	37	106
1	LR100	165	53	68	44	123
1 1/2	LR150	216	68	95	60	163
2	LR200	245	84	111	75	191

*All Dimensions are subject to change without notice.

T Type

Specifications

Threaded for use with RMC and IMC
 Stainless Steel 316/304 (Natural Finish)
 Covers Material : Stainless Steel 316/304 (Casting)
 Screws Material : Stainless Steel 316/304
 Standard Gaskets Material : Rubber



Ordering Information

*S for Stainless steel 316 / 304 to the end of Cat No.. Ex : T100S

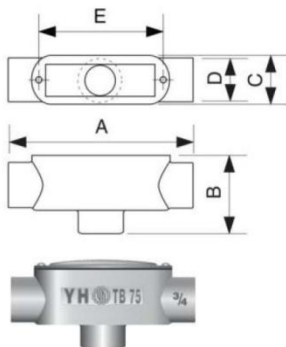
Trade Size	Cat. #	Dimensions (mm)				
		A	B	C	D	E
3/4	T 75	164	44	63	37	106
1	T100	187	55	68	44	123
1 1/2	T150	246	68	96	60	163
2	T200	277	84	112	75	191

*All Dimensions are subject to change without notice.

TB Type

Specifications

Threaded for use with RMC and IMC
 Stainless Steel 316/304 (Natural Finish)
 Covers Material : Stainless Steel 316/304 (Casting)
 Screws Material : Stainless Steel 316/304
 Standard Gaskets Material : Rubber



Ordering Information

*S for Stainless steel 316 / 304 to the end of Cat No.. Ex : TB100S

Trade Size	Cat. #	Dimensions (mm)				
		A	B	C	D	E
3/4	TB 75	164	65	41	37	106
1	TB100	187	73	47	44	123
1 1/2	TB150	246	98	64	60	163
2	TB200	277	115	82	75	191

*All Dimensions are subject to change without notice.